

***ROSCOMMONO
EQUIPMENT
CENTER***

Project Number 60

September 1998

M548/M1015 Full Tracked Vehicle

Design Packet 60A

M548 Cab Design

Northeast Forest Fire Supervisors
In Cooperation with
Michigan's Forest Fire Experiment Station

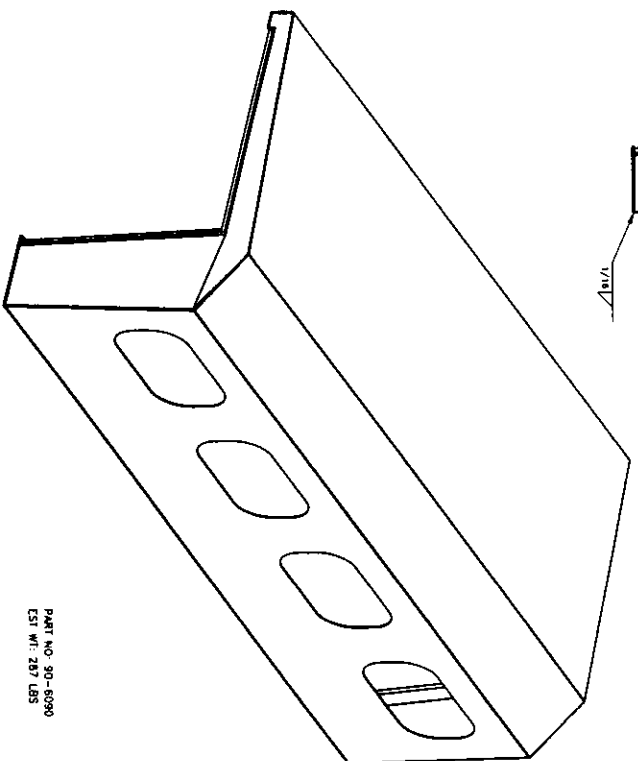
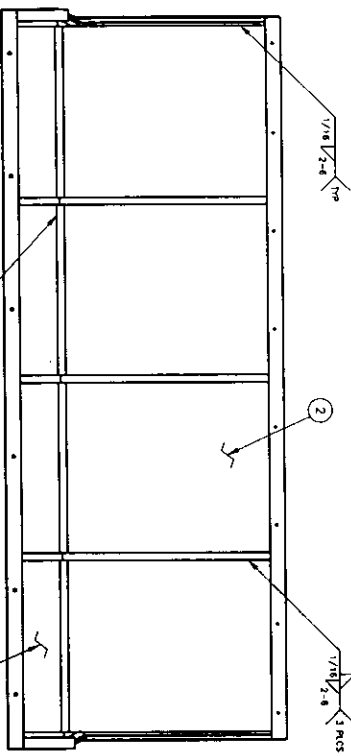
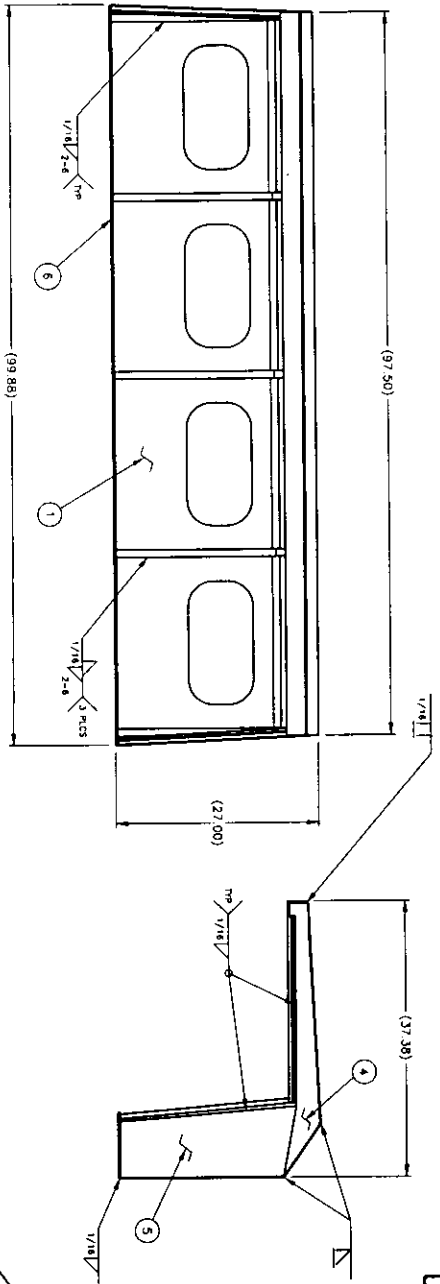
M548 Cab Design

As with most U.S. Military vehicles, the M548 normally comes with a canvas top. There are some fiberglass tops available, but they are hard to find. They also have an opening for mounting a gun turret.

REC has designed a cab top made of 11 gauge (1/8 inch thick) steel to replace the military cab top. The drawing details should help you purchase materials and cut them to size. M548 cabs may vary to some degree. We suggest that the cab top framework be tack welded together on the vehicle. This will assure that the cab top seats properly on the windshield frame and lower cab sill. At this point, the framework can be carefully removed and the sheet steel panels can be welded on. After reinstalling the cab, the doors may need adjusting to fit the cab correctly.

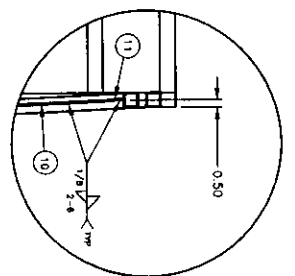
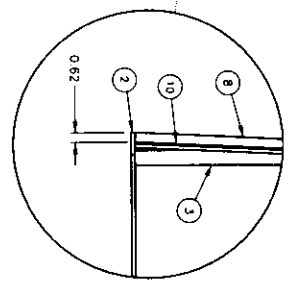
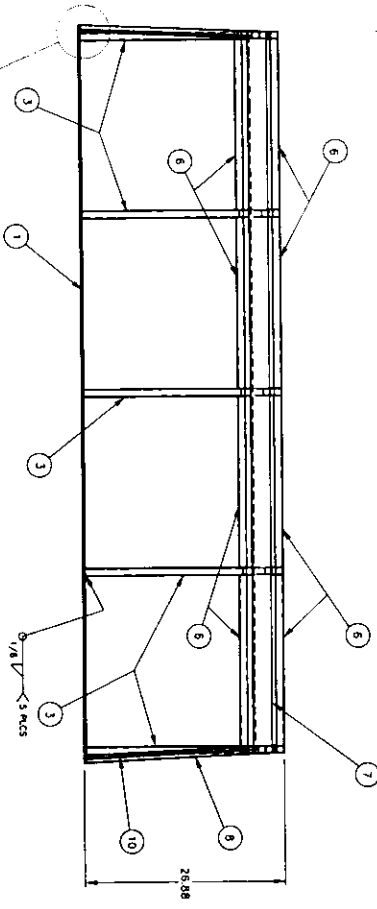
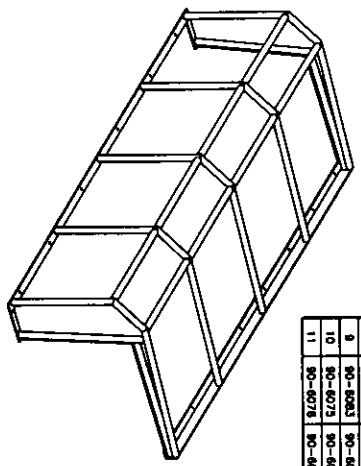
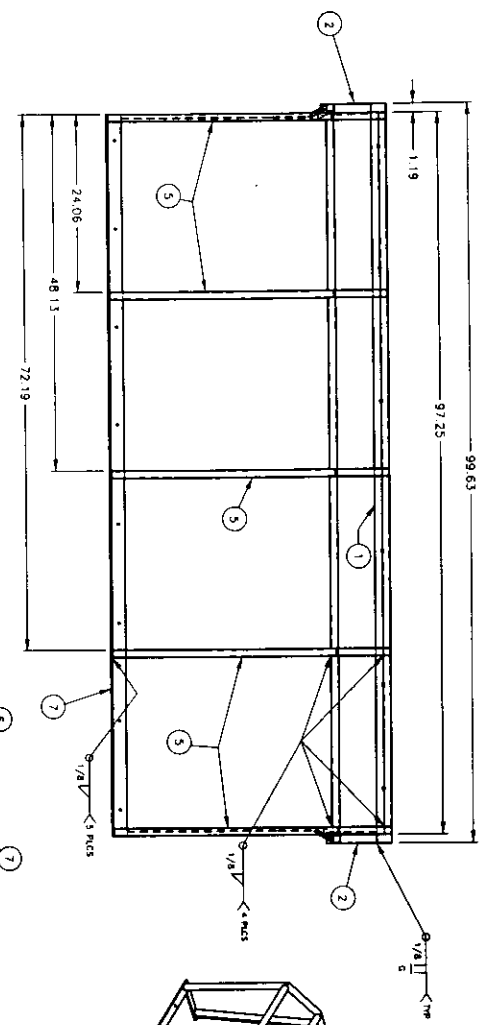
No detail information is included for the window materials. REC used a clear polycarbonate (Lexan) pane. A local auto glass supplier can size the glass or other material correctly and supply the appropriate sealing gasket for the material chosen.

ITEM	PART NO.	QTY.	EST. WT.	DESCRIPTION
1	90-6070	1	54.2	BACK PANEL
2	90-6086	1	98.7	TOP PANEL
3	90-6087	1	28.1	ANGLE PANEL
4	90-6088	2	2.87	UPPER SIDE PANEL
5	90-6089	2	8.43	VERT. SIDE PANEL
6	90-6090	1	97.2	CAB FRAME W/CLIMBENT



PART NO: 90-6090
EST. WT: 287 LBS

STO. TOC.	DATE	BY	CHKD.	APPROVED
DESIGNER	11/18			
DRAWN				
CHECKED				
APPROVED				
FOREST FIRE EXPERIMENT STATION P.O. BOX 68 ROSCOMMON, MICHIGAN 48853 SCALE: 3/4" = 1'-0" TITLE: CAB COMPLETE				
PROJECT NO.	REC-80			
PROJECT NO. 90-6090				

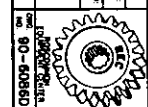


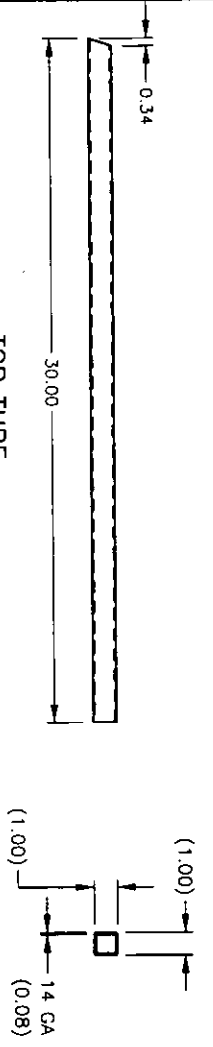
ITEM	PART NO.	QTY	EST WT
1	90-6073	1	14.0
2	90-6074	1	0.72
3	90-6080	5	1.83
4	90-6079	5	0.87
5	90-6078	9	2.48
6	90-6084	8	1.81
7	90-6072	1	28.2
8	90-6081	2	2.12
9	90-6083	2	2.38
10	90-6075	2	0.45
11	90-6076	2	0.54

PART NO. 90-6088
EST. WT. 187 LBS

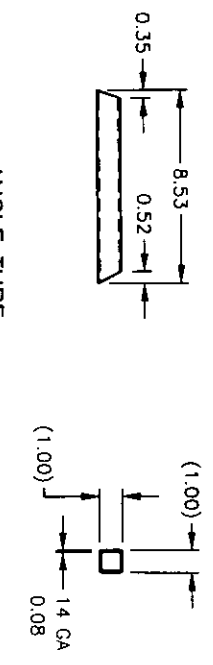
DATE: 7/21/78
DRAWN BY: [Signature]
CHECKED BY: [Signature]
PROJECT NO.: [Blank]
REV: 00

TITLE: CAB FRAME WELDMENT
P.O. BOX 68
ROSCOMMON, MICHIGAN
48853

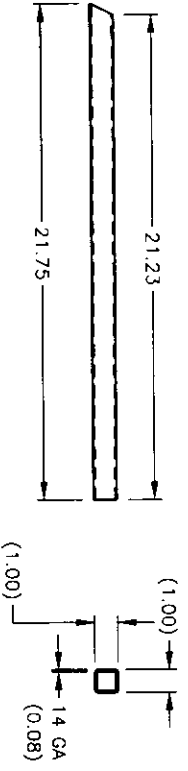




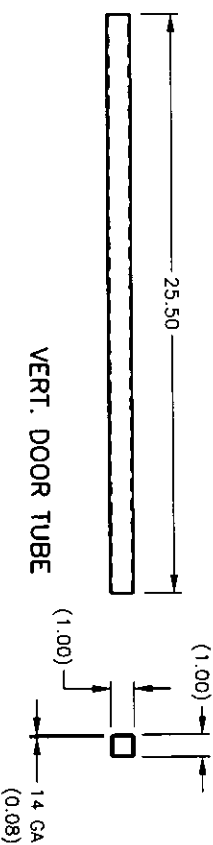
TOP TUBE
 PART NO: 90-6078
 MAT'L: TUBE, SQ 1" X 1" X 14 GA WA
 G10100
 FEES SPEC NO: AE-10001AL
 EST WT: 2.58 LBS



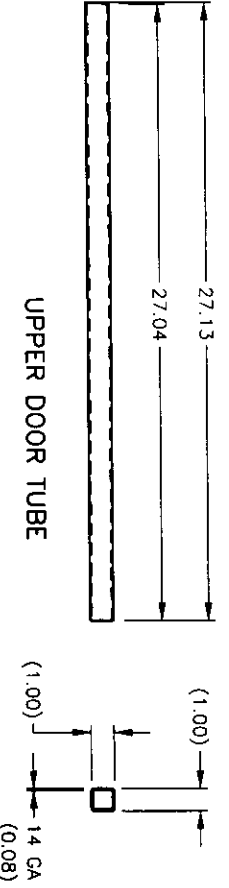
ANGLE TUBE
 PART NO: 90-6079
 MAT'L: TUBE, SQ 1" X 1" X 14 GA WA
 G10100
 FEES SPEC NO: AE-10001AL
 EST WT: 0.70 LBS



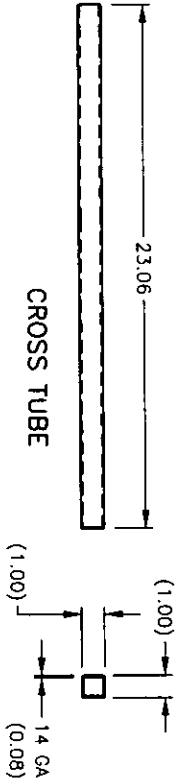
VERT. TUBE
 PART NO: 90-6080
 MAT'L: TUBE, SQ 1" X 1" X 14 GA WA
 G10100
 FEES SPEC NO: AE-10001AL
 EST WT: 1.99 LBS



VERT. DOOR TUBE
 PART NO: 90-6081
 MAT'L: TUBE, SQ 1" X 1" X 14 GA WA
 G10100
 FEES SPEC NO: AE-10001AL
 EST WT: 2.20 LBS

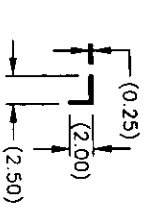
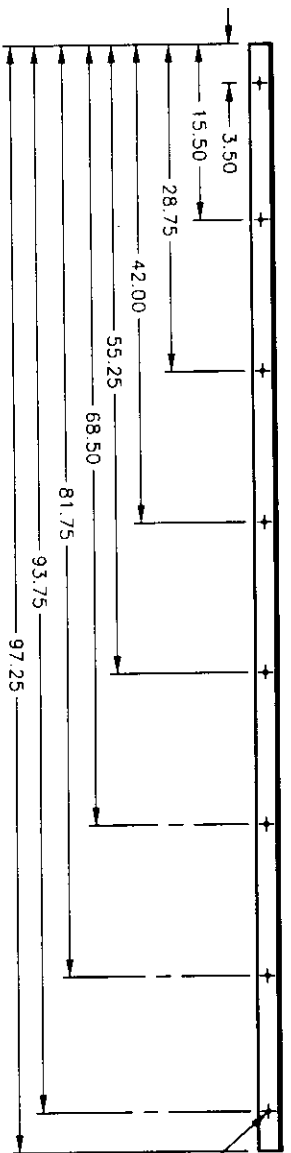


UPPER DOOR TUBE
 PART NO: 90-6083
 MAT'L: TUBE, SQ 1" X 1" X 14 GA WA
 G10100
 FEES SPEC NO: AE-10001AL
 EST WT: 2.34 LBS



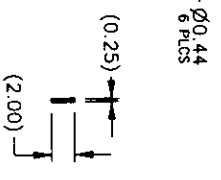
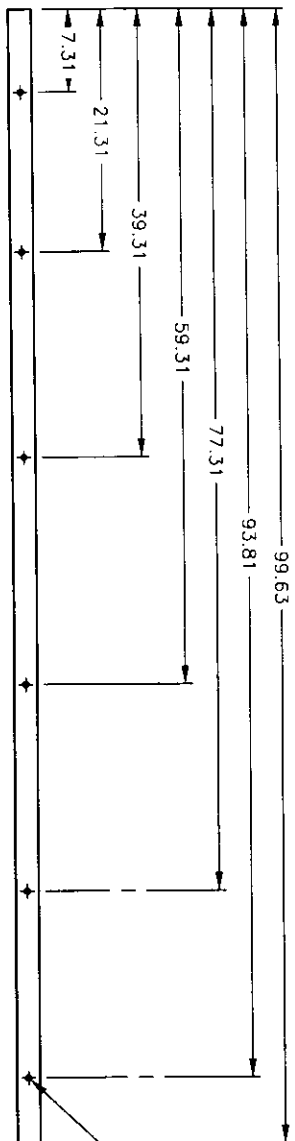
CROSS TUBE
 PART NO: 90-6084
 MAT'L: TUBE, SQ 1" X 1" X 14 GA WA
 G10100
 FEES SPEC NO: AE-10001AL
 EST WT: 1.99 LBS

STD. TOL.									
DECIMAL:	1 PLACE	2 PLACES	3 PLACES	ANGULAR:	NO	BY	DATE		
DATE:	7/19/98								
SCALE:	1/4"								
PROJECT NO.:	REC-60								
TITLE:	FOREST FIRE EXPERIMENT STATION								
	P.O. BOX 68 ROSCOMMON, MICHIGAN 48653								
	DRAWN: DOP								
	CHECKED:								
	APPROVED:								
	NOTE:								
PROJECT NO. 90-6085C EQUIPMENT CENTER									



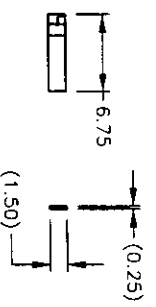
FRONT CAB ANGLE

PART NO: 90-6072
 MAT'L: ANGLE 2-1/2" X 2" X 1/4"
 K02800
 FFES SPEC NO: AK-41008AG
 EST WT: 29.1 LBS



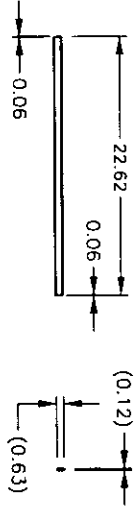
BASE /REAR

PART NO: 90-6073
 MAT'L: BAR, FLAT 1/4" X 2" X 1/4"
 G10200
 FFES SPEC NO: AB-00408AA
 EST WT: 14.0 LBS



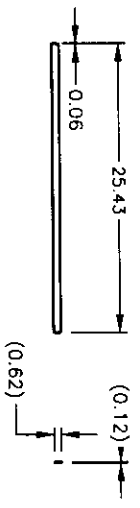
BASE /SIDE

PART NO: 90-6074
 MAT'L: BAR, FLAT 1/4" X 1-1/2" X HR
 G10200
 FFES SPEC NO: AB-00406AA
 EST WT: 0.72 LBS



VERT. DOOR STOP

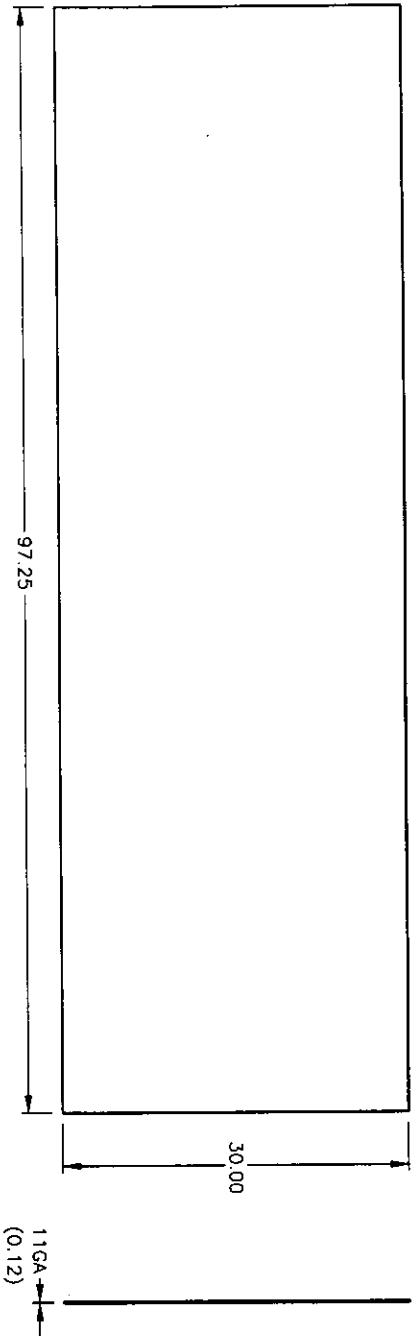
PART NO: 90-6075
 MAT'L: BAR, FLAT 1/8" X 5/8" X HR
 G10200
 FFES SPEC NO: AB-10205AA
 EST WT: 0.47 LBS



HORIZ. DOOR STOP

PART NO: 90-6076
 MAT'L: BAR, FLAT 1/8" X 5/8" X HR
 G10200
 FFES SPEC NO: AB-10205AA
 EST WT: 0.54 LBS

STD. TOL.	DECIMAL:	1/64" ± .001	1/32" ± .003	1/16" ± .005	1/8" ± .008	3/16" ± .010	1/4" ± .012	3/8" ± .015	1/2" ± .018	3/4" ± .020	1" ± .025	1 1/2" ± .030	2" ± .035	3" ± .040	4" ± .045	6" ± .050	8" ± .055	10" ± .060
PROJECT NO:	DATE:	7/9/98	SCALE:	1/8"	TITLE:	FOREST FIRE EXPERIMENT STATION												
REV: 00	BY:	DATE:	APPROVED:	P.O. BOX 68 ROSCOMMON, MICHIGAN 48653														
DRAWN:				CAB FRAME DETAILS														
CHECKED:				ENCLOSURE CENTER														
APPROVED:				Dwg. NO. 90-6077C														

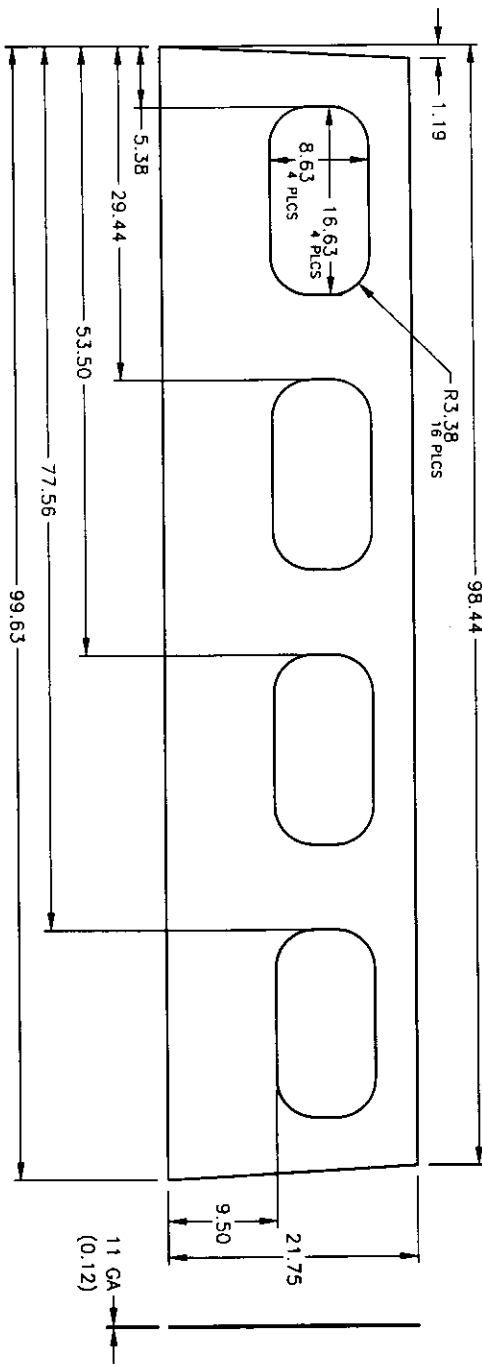


TOP PANEL

PART NO: 90-6069
 MATL: SHEET, 11 GA, 5x10, HR P&O
 ASTM A569
 FFES SPEC NO: AA-C1150AP
 EST WT: 98.7 LBS

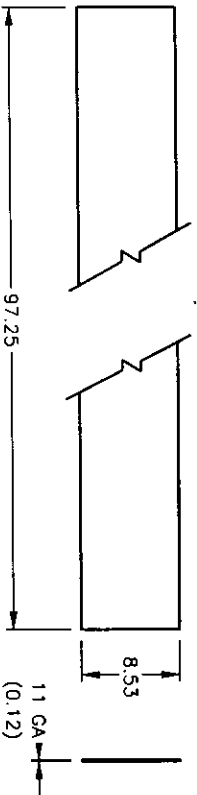
BACK PANEL

PART NO: 90-6070
 MATL: SHEET, 11 GA, 5 x10, HR P&O
 ASTM A569
 FFES SPEC NO: AA-C1150AP
 EST WT: 54.2 LBS



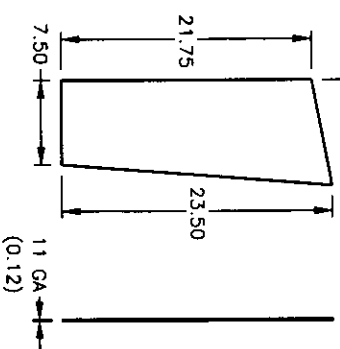
ANGLE PANEL

PART NO: 90-6087
 MATL: SHEET, 11 GA, 4x10, HR P&O
 ASTM A569
 FFES SPEC NO: AA-C1140AP
 EST WT: 28.1 LBS



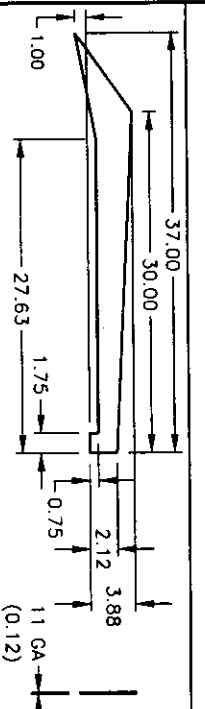
UPPER SIDE PANEL

PART NO: 90-6088
 MATL: SHEET, 11 GA, 4x8, HR P&O
 ASTM A569
 FFES SPEC NO: AA-C1148AP
 EST WT: 2.76 LBS



VERT. SIDE PANEL

PART NO: 90-6089
 MATL: SHEET, 11 GA, 4x8, HR P&O
 ASTM A569
 FFES SPEC NO: AA-C1148AP
 EST WT: 6.43 LBS



STG. TOL.	DECIMAL	1/16	1/32	1/64	1/128	1/256	1/512
ANGULAR:	1/4	1/8	1/16	1/32	1/64	1/128	1/256
DATE:	7/15/98						
SCALE:	1/8						
PROJECT NO.:	REC-60						
TITLE:	CAB PANEL DETAILS						
DRAWN:							
CHECKED:							
APPROVED:							
NOTE:							
P.O. BOX 68		ROSCOMMON, MICHIGAN					48653
DWC NO. 90-6071C							