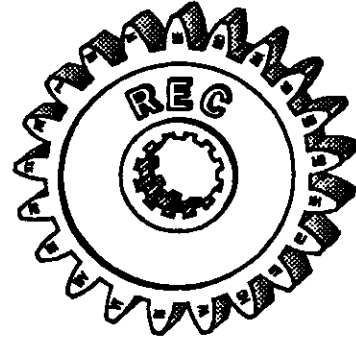


# **ROSCOMMON EQUIPMENT CENTER**



*Northeast Forest Fire Supervisors in cooperation with Michigan's Forest Fire Experiment Station*

P.O. Box 68, Roscommon, MI 48653

July 1993

## **PROJECT 44 - Michigan Large Skidder<sup>1</sup>**

Specially modified skidders have been used successfully in forest fire for twenty five years. The Roscommon Equipment Center published an Equipment Evaluation Report in 1979 entitled *Skidders in Forest Fire Control*. This report discusses the use of skidders with water tanks and pumping units, as well as with fireline plows. It also lists the advantages and disadvantages of using these specialized vehicles for this use.

Noted for their power and excellent cross-country mobility, two types of skidder tank systems have been designed for forest fire control. This project record shows sketches of the tank utilized by the Michigan Department of Natural Resources on John Deere 540 series skidders. A variation of this tank has been used on skidders made by other manufacturers.

Others have used temporary or portable tank systems for use with these vehicles. Generally, portable tanks are designed to be winched up into a logging arch area or, in the case of a grapple skidder, lifted in place by the grapple. REC Project 26, *Portable Fire Fighting Unit for Skidders*, provides details of Maine's portable tank system. This project report is available from the address above.

Information contained in this report has been developed for the guidance of employees of the member States, Provinces and Federal Agencies.

The Use of trade, firm or corporation names is for the information and convenience of the user. Such use does not constitute an official evaluation, conclusion, recommendation, endorsement, or approval of any product or service to the exclusion of others which may be suitable.

<sup>1</sup> This project bulletin contains information that may change regularly. Its contents may include preliminary drawings or manufacturer's product data that may have changed. It is intended primarily for conceptual use. Additional or updated information may be available by contacting the address above.



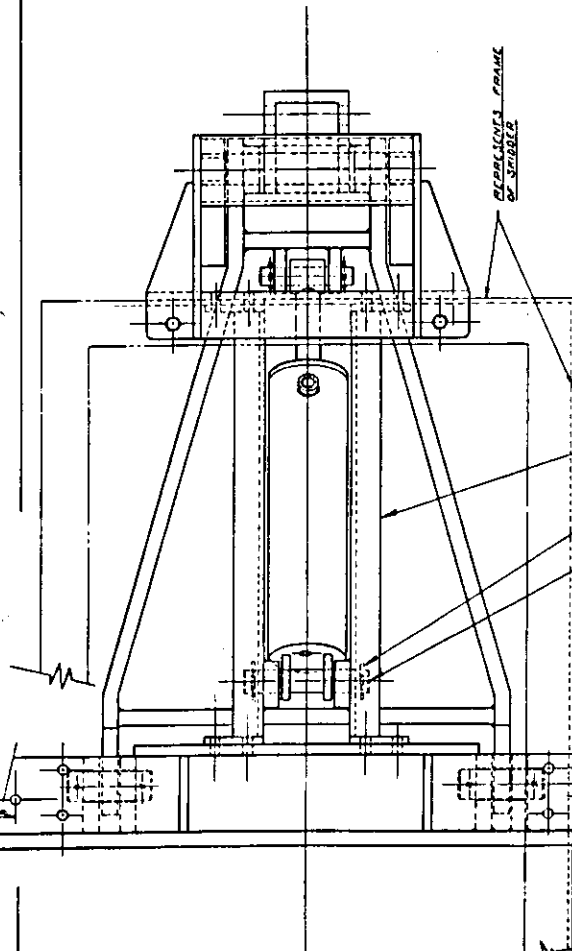


**MICHIGAN FOREST FIRE EXPERIMENT STATION**  
**MICHIGAN DEPARTMENT OF NATURAL RESOURCES**

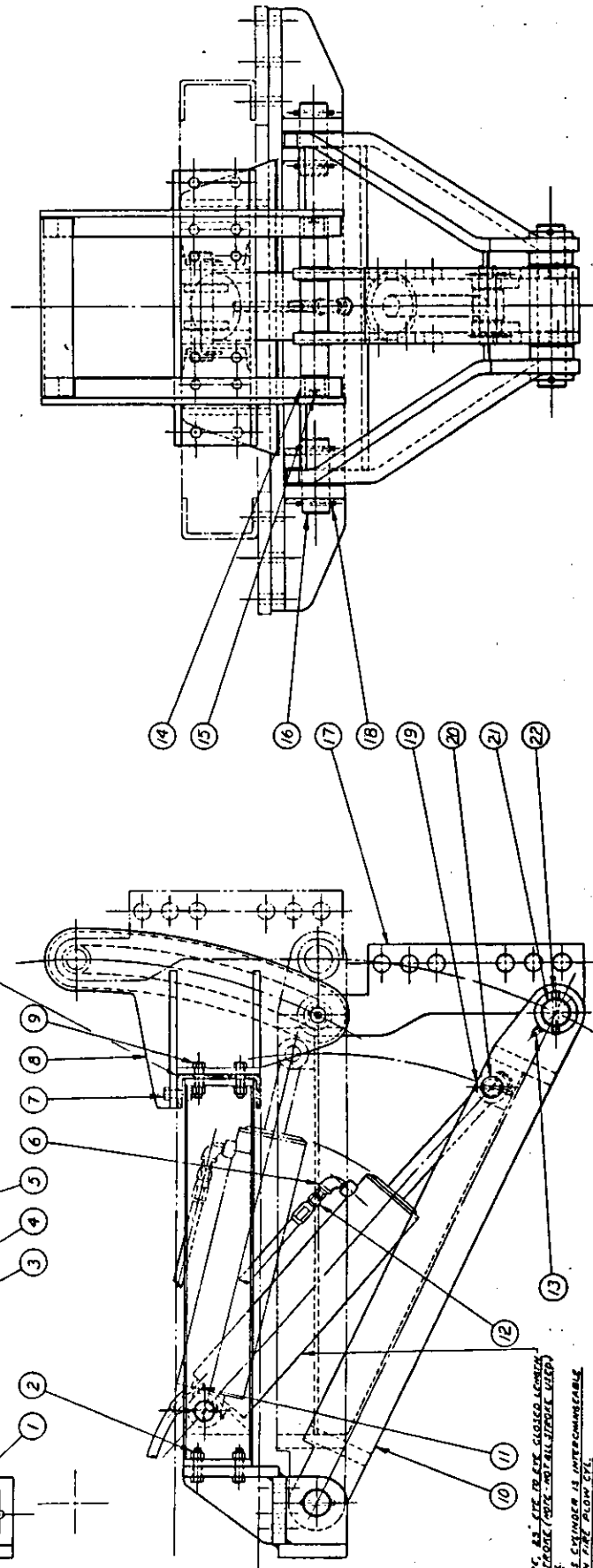
DESIGNED BY: Wm. H. B. B. CHECKED BY: \_\_\_\_\_  
 DRAWN BY: Wm. H. B. B. APPROVED BY: \_\_\_\_\_  
 DATE: 4-28-33 SCALE: 1/2"

DET. NO.	TITLE	QTY.	MATERIAL
1	ANCHOR BRACKET	1	1/2" X 3/4" X 1/2" PLATE
2	1/2" X 2 1/2" N.C. MET. HO. BOLT W/ NUT & WASH.	2	1/2" X 2 1/2" N.C. MET. HO. BOLT W/ NUT & WASH.
3	1/2" X 2 1/2" N.C. MET. HO. BOLT W/ NUT & WASH.	2	1/2" X 2 1/2" N.C. MET. HO. BOLT W/ NUT & WASH.
4	1/2" X 2 1/2" N.C. MET. HO. BOLT W/ NUT & WASH.	2	1/2" X 2 1/2" N.C. MET. HO. BOLT W/ NUT & WASH.
5	1/2" X 2 1/2" N.C. MET. HO. BOLT W/ NUT & WASH.	2	1/2" X 2 1/2" N.C. MET. HO. BOLT W/ NUT & WASH.
6	1/2" X 2 1/2" N.C. MET. HO. BOLT W/ NUT & WASH.	2	1/2" X 2 1/2" N.C. MET. HO. BOLT W/ NUT & WASH.
7	1/2" X 2 1/2" N.C. MET. HO. BOLT W/ NUT & WASH.	2	1/2" X 2 1/2" N.C. MET. HO. BOLT W/ NUT & WASH.
8	1/2" X 2 1/2" N.C. MET. HO. BOLT W/ NUT & WASH.	2	1/2" X 2 1/2" N.C. MET. HO. BOLT W/ NUT & WASH.
9	1/2" X 2 1/2" N.C. MET. HO. BOLT W/ NUT & WASH.	2	1/2" X 2 1/2" N.C. MET. HO. BOLT W/ NUT & WASH.
10	1/2" X 2 1/2" N.C. MET. HO. BOLT W/ NUT & WASH.	2	1/2" X 2 1/2" N.C. MET. HO. BOLT W/ NUT & WASH.
11	1/2" X 2 1/2" N.C. MET. HO. BOLT W/ NUT & WASH.	2	1/2" X 2 1/2" N.C. MET. HO. BOLT W/ NUT & WASH.
12	1/2" X 2 1/2" N.C. MET. HO. BOLT W/ NUT & WASH.	2	1/2" X 2 1/2" N.C. MET. HO. BOLT W/ NUT & WASH.
13	1/2" X 2 1/2" N.C. MET. HO. BOLT W/ NUT & WASH.	2	1/2" X 2 1/2" N.C. MET. HO. BOLT W/ NUT & WASH.
14	1/2" X 2 1/2" N.C. MET. HO. BOLT W/ NUT & WASH.	2	1/2" X 2 1/2" N.C. MET. HO. BOLT W/ NUT & WASH.
15	1/2" X 2 1/2" N.C. MET. HO. BOLT W/ NUT & WASH.	2	1/2" X 2 1/2" N.C. MET. HO. BOLT W/ NUT & WASH.
16	1/2" X 2 1/2" N.C. MET. HO. BOLT W/ NUT & WASH.	2	1/2" X 2 1/2" N.C. MET. HO. BOLT W/ NUT & WASH.
17	1/2" X 2 1/2" N.C. MET. HO. BOLT W/ NUT & WASH.	2	1/2" X 2 1/2" N.C. MET. HO. BOLT W/ NUT & WASH.
18	1/2" X 2 1/2" N.C. MET. HO. BOLT W/ NUT & WASH.	2	1/2" X 2 1/2" N.C. MET. HO. BOLT W/ NUT & WASH.
19	1/2" X 2 1/2" N.C. MET. HO. BOLT W/ NUT & WASH.	2	1/2" X 2 1/2" N.C. MET. HO. BOLT W/ NUT & WASH.
20	1/2" X 2 1/2" N.C. MET. HO. BOLT W/ NUT & WASH.	2	1/2" X 2 1/2" N.C. MET. HO. BOLT W/ NUT & WASH.
21	1/2" X 2 1/2" N.C. MET. HO. BOLT W/ NUT & WASH.	2	1/2" X 2 1/2" N.C. MET. HO. BOLT W/ NUT & WASH.
22	1/2" X 2 1/2" N.C. MET. HO. BOLT W/ NUT & WASH.	2	1/2" X 2 1/2" N.C. MET. HO. BOLT W/ NUT & WASH.

**HYDRAULICALLY ADJUSTABLE HITCH (EQUATING)**  
 FOR MICHIGAN HYD. FIRE PLOW.  
 THIS IS THE FIRST DESIGN FOR MULTI-AXLE  
 M-2000 TRACTOR WHICH IS DESIGNED TO BE ADJUSTABLE  
 TO OTHER TYPES OF TRACTORS.



DEPENDENCY FRAME OF SHOCK



4" DIA. AT THE END OF GUSSET LENGTH  
 1/2" DIA. AT THE END OF GUSSET LENGTH  
 1/2" DIA. AT THE END OF GUSSET LENGTH  
 1/2" DIA. AT THE END OF GUSSET LENGTH



